

# SWEAT DROP-EAR ELBOW

## »» 616 SERIES

### SPECIFICATION

Sioux Chief 616 Series brass drop-ear elbow fittings shall be used where necessary in hot or cold water distribution systems. Brass fitting shall have three mounting ears, with female sweat x FIP thread connections.

### MATERIALS

Brass<sup>1</sup>

### DIMENSIONS

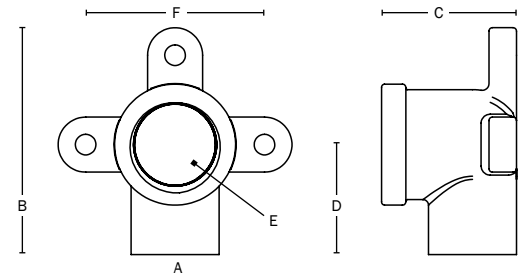
Model:	2E3	3E3
<b>A:</b> Inlet	1/2" FSWT	3/4" FSWT
<b>B:</b> Overall Height	2-1/16"	2-13/16"
<b>C:</b> Depth	1-1/4"	1-3/4"
<b>D:</b> Base to Outlet C/L	1"	1-9/16"
<b>E:</b> Outlet	1/2" FIP thread	3/4" FIP thread
<b>F:</b> Mounting Width	1-5/8"	2"

1 C37700 brass material - for non-potable applications only

ITEM # SUBMITTED	_____
JOB NAME	_____
LOCATION	_____
ENGINEER	_____
CONTRACTOR	_____
PO#	_____ TAG _____



616-3E3



Create Item Number

## 616-A

e.g. **616-2E3:** 1/2" FSWT x 1/2" FIP brass drop-ear elbow

### CONNECTION SIZE A

**2E3** = 1/2" FSWT x 1/2" FIP drop-ear elbow

**3E3** = 3/4" FSWT x 3/4" FIP drop-ear elbow